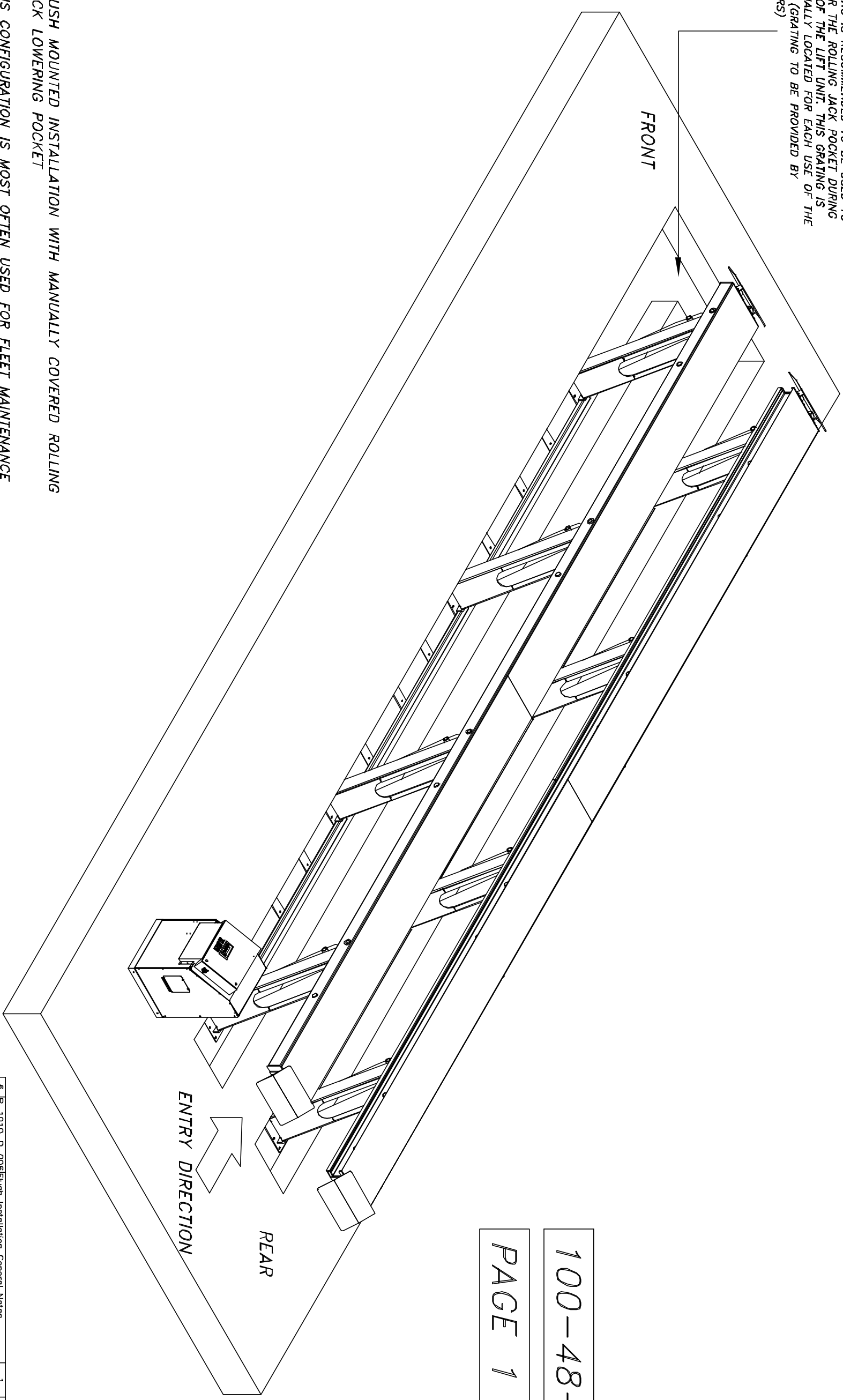


GRATING IS RECOMMENDED TO BE USED TO COVER THE ROLLING JACK POCKET DURING USE OF THE LIFT UNIT. THIS GRATING IS MANUALLY LOCATED FOR EACH USE OF THE LIFT. (GRATING TO BE PROVIDED BY OTHERS)



100-48-FLUSH

PAGE 1 of 2

FLUSH MOUNTED INSTALLATION WITH MANUALLY COVERED ROLLING JACK LOWERING POCKET

THIS CONFIGURATION IS MOST OFTEN USED FOR FLEET MAINTENANCE APPLICATIONS THAT INVOLVE A MODERATE RATIO OF TIRE, WHEEL OR BRAKE SERVICES.

THE FRONT OF THE LIFT UNIT IS PLACED TO THE FRONT OF THE LIFT TRENCH. FOR THIS INSTALLATION, THE LIFT UNIT WILL TRANSLATE TO THE REAR AS IT ARTICULATES UPWARD. ALLOW APPROXIMATELY 60 INCHES AT THE REAR OF THE LIFT FOR THIS MOTION.

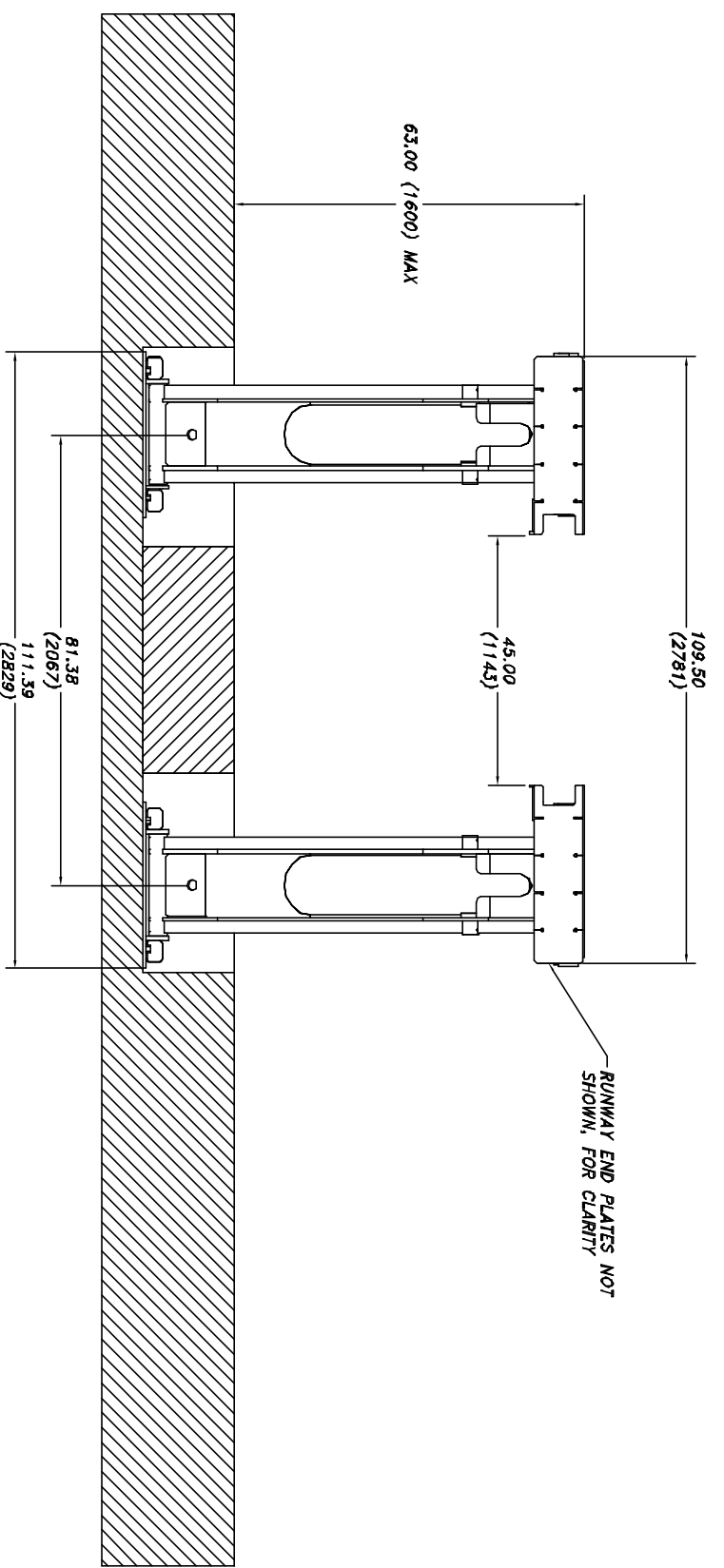
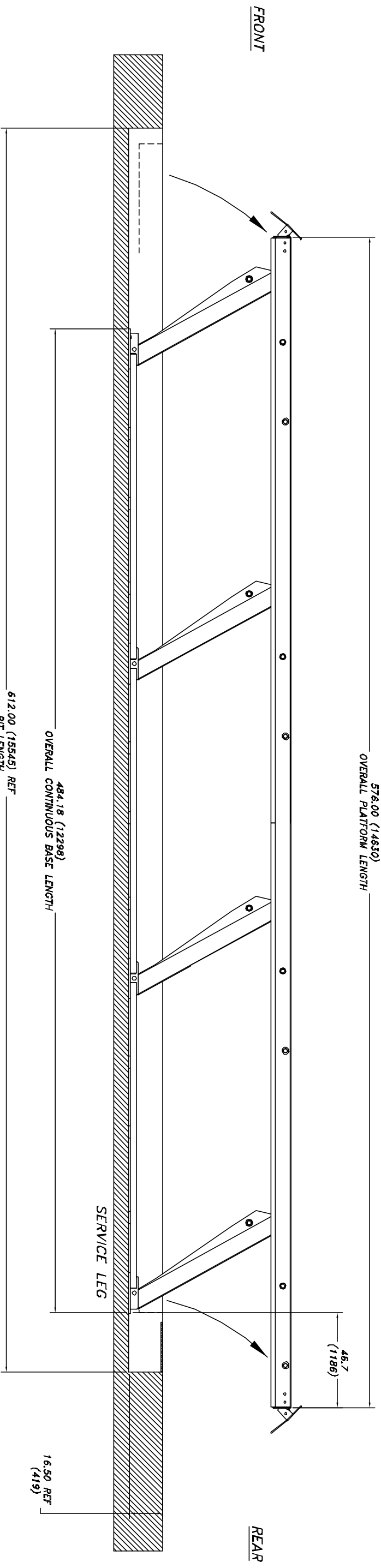
UNITS = INCHES (mm)

ITEM	NAME	DESCRIPTION	QTY	MATERIAL	VENDOR	NOTE	MASS	PRICE
6	P-1010-D-006	Flush Installation General Notes	1					
5	P-010-D-005	Service Leg Conduit Details	1					
4	P-010-D-004	Anchor Details & Shimming	1					
3	P-010-D-003	Control Console & Stud-Up Details	1					
2	P-3410-D-002	100-48-Flush Lift Data Table	1					
1	P-3410-D-001	100-48-Flush, P11 Drawings & Sections	1					

Parts List

NOTICE OF CONFIDENTIAL INFORMATION		NOTES:		TOLERANCES:		SCALE		DRAWN		TITLE	
INFORMATION CONTAINED HEREIN IS CONFIDENTIAL AND PROPERTY OF MOHAWK RESOURCES LTD. IT IS TO BE KEPT SECRET AND NOT DISCLOSED OR REPRODUCED IN ANY MANNER WITHOUT THE WRITTEN PERMISSION OF MOHAWK RESOURCES LTD. THE INFORMATION SHALL NOT BE USED OR DISCLOSED BY THE RECIPIENT FOR ANY OTHER PURPOSES WHATSOEVER.		1. REMOVE ALL SHARP CORNERS & EDGES. 2. UNLESS OTHERWISE SPECIFIED, SURFACE FINISH TO BE 125 RMS. 3. WELDING MEDUIM SHALL CONFORM TO AWS SPECIFICATIONS TO E-70XX ELECTRODES OR E-7011 CODE S3 FLUX CORE WIRE ONLY.		ANGULAR 1.0 HORIZONTAL 3.0 VERTICAL 3.0 DXXX 0.030		5/16 CHECKED		Pw/v/089 APPROVED		MOHAWK RESOURCES LTD. INSTALLATION REQUIREMENTS DRAWING, 100-48-FLUSH	
FILE NAME: P-3410-A-001		NEXT ASSEMBLY		DATE: 7/11/2005		WEIGHT: LB.		FRDM		DRAWING NUMBER: P-3410-A-001	

D-size



UNITS = INCHES (mm)

100-48-FLUSH

PAGE 2 of 2

D-SIZE

FRONT ELEVATION VIEW

NOTICE OF CONFIDENTIAL INFORMATION

MOHAWK RESOURCES LTD. AND PROPERTY OF MOHAWK RESOURCES LTD. THESE DRAWINGS OR INFORMATION THEREON SHALL NOT BE USED FOR REPRODUCTION, INSTALLATION, OR MAINTENANCE OF THE PRODUCT FOR ANY OTHER PURPOSES WITHOUT THE WRITTEN PERMISSION OF MOHAWK RESOURCES LTD.

NOTES

1. REMOVE ALL SHARP CORNERS & EDGES.
2. UNLESS OTHERWISE SPECIFIED, SURFACE FINISH TO BE 125 RMS.
3. WELDING MEDIUM SHALL CONFORM TO AWS SPECIFICATIONS TO E-70XX ELECTRODES OR E-7011 CODE 5.3 FLUX CORE WIRE ONLY.

TOLERANCES

APPROXIMATE ± 1.0
 DIMENSIONAL ± .030
 DECIMAL ± .005
 XXXX ± .005

FILE NAME P-3410-A-001

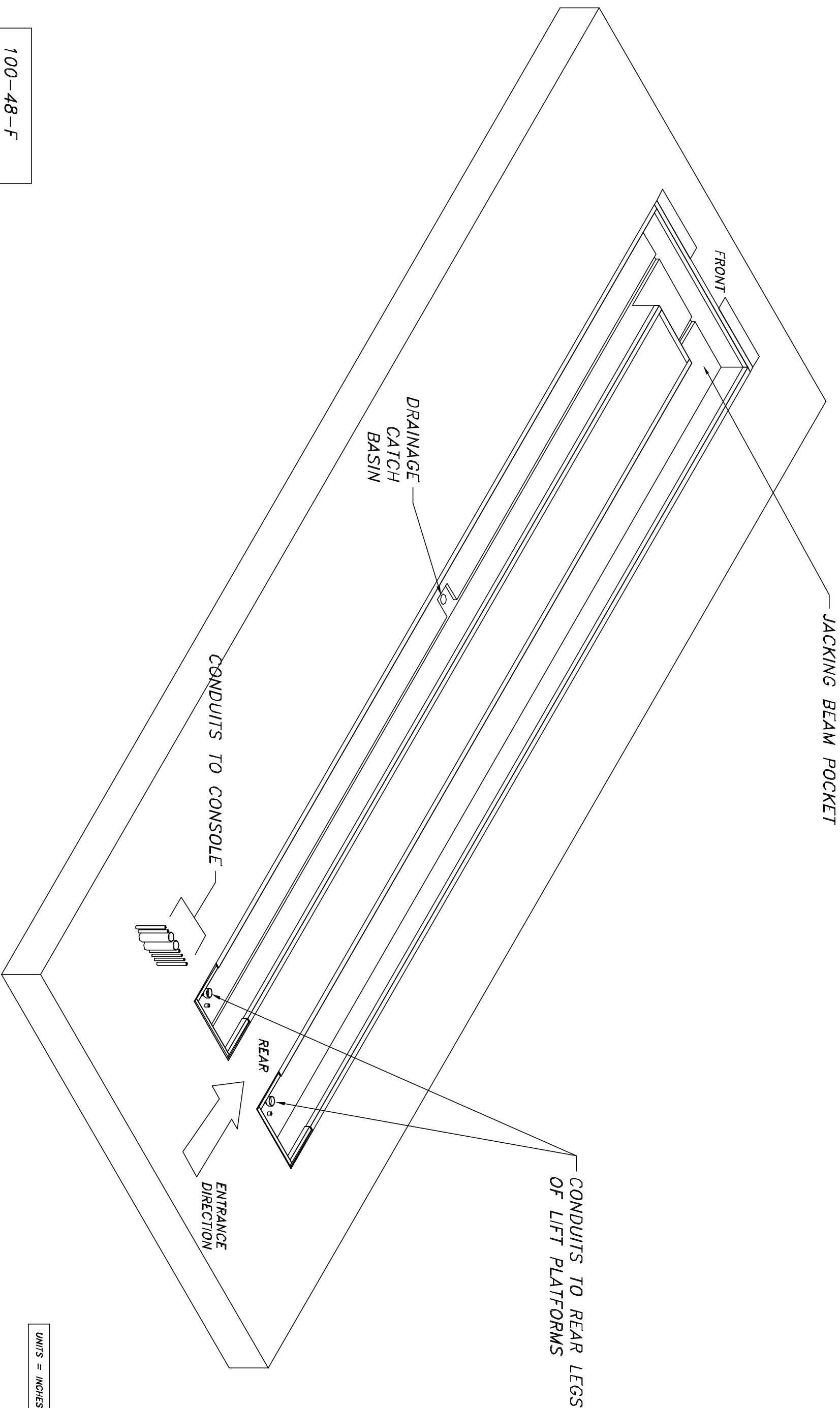
P-3410-
 NEXT ASSEMBLY

SCALE
 0.04
 CHECKED

DATE 7/11/2005

DRAWN RMY/7089
 APPROVED

MOHAWK RESOURCES LTD.
 TITLE INSTALLATION REQUIREMENTS
 DRAWING, 100-48-FLUSH
 FROM
 DRAWING NUMBER P-3410-A-001



UNITS = INCHES (mm)

100-48-F
PAGE 1 of 8

NOTICE OF CONFIDENTIAL INFORMATION
 INFORMATION CONTAINED HEREIN IS CONFIDENTIAL AND PROPERTY OF MOHAWK RESOURCES LTD. WHERE DRAWING IS FURNISHED TO OTHERS IT SHALL BE USED ONLY FOR PURPOSES OF INSPECTION, INSTALLATION, MAINTENANCE AND REPAIR. IT IS NOT TO BE REPRODUCED OR BY THE RECIPIENT FOR ANY OTHER PURPOSES WHATSOEVER.

NOTES:
 1. REMOVE ALL SHARP CORNERS & EDGES.
 2. UNLESS OTHERWISE SPECIFIED, SURFACE FINISH TO BE 123 RNS.
 3. WELDING METAL SHALL CONFORM TO AISC SPECIFICATIONS TO A53 ELECTRODES OR E-7011 CODE 53 FLOW CURVE WIRE D1E1.

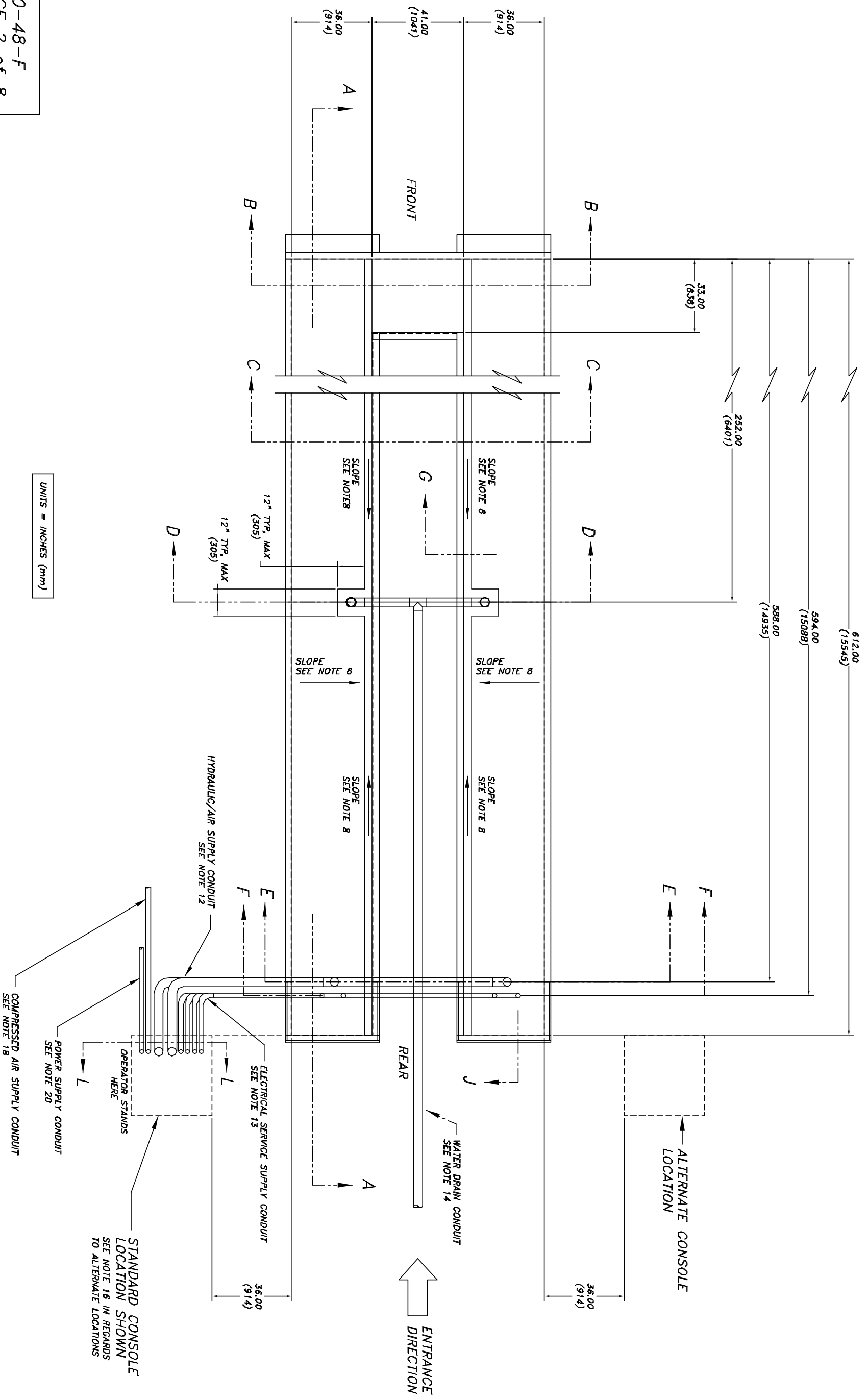
TOLERANCES:
 ANGULAR ± 1°
 DIMENSIONAL ± .030
 DECIMAL ± .005
 FILE NAME P-3410-0-001

P-3410-4-001	SCALE	3/64
	CHECKED	
	DATE	7/11/05
	DRAWN	dk
	APPROVED	
	WEIGHT	LBS

MOHAWK RESOURCES LTD.
 TITLE PIT DRAWINGS & SECTIONS FOR 100-48-F (FLUSH)
 DRAWING NUMBER P-3410-D-001

100-48-F
PAGE 2 of 8

UNITS = INCHES (mm)



NOTICE OF CONFIDENTIAL INFORMATION
 INFORMATION CONTAINED HEREIN IS CONFIDENTIAL AND PROPERTY OF MOHAWK RESOURCES LTD. IT IS TO BE USED SOLELY FOR THE PURPOSES OF INSPECTION, INSTALLATION OR MAINTENANCE. THE INFORMATION SHALL NOT BE USED OR DISCLOSED BY THE RECIPIENT FOR ANY OTHER PURPOSES WHATSOEVER.

NOTES:
 1. REMOVE ALL SHARP CORNERS & EDGES.
 2. UNLESS OTHERWISE SPECIFIED, SURFACE FINISH TO BE 125 RMS.
 3. WELDING MEDIUM SHALL CONFORM TO AWS SPECIFICATIONS TO E-70XX ELECTRODES OR E-70T1 CODE S3 FLUX CORE WIRE ONLY.

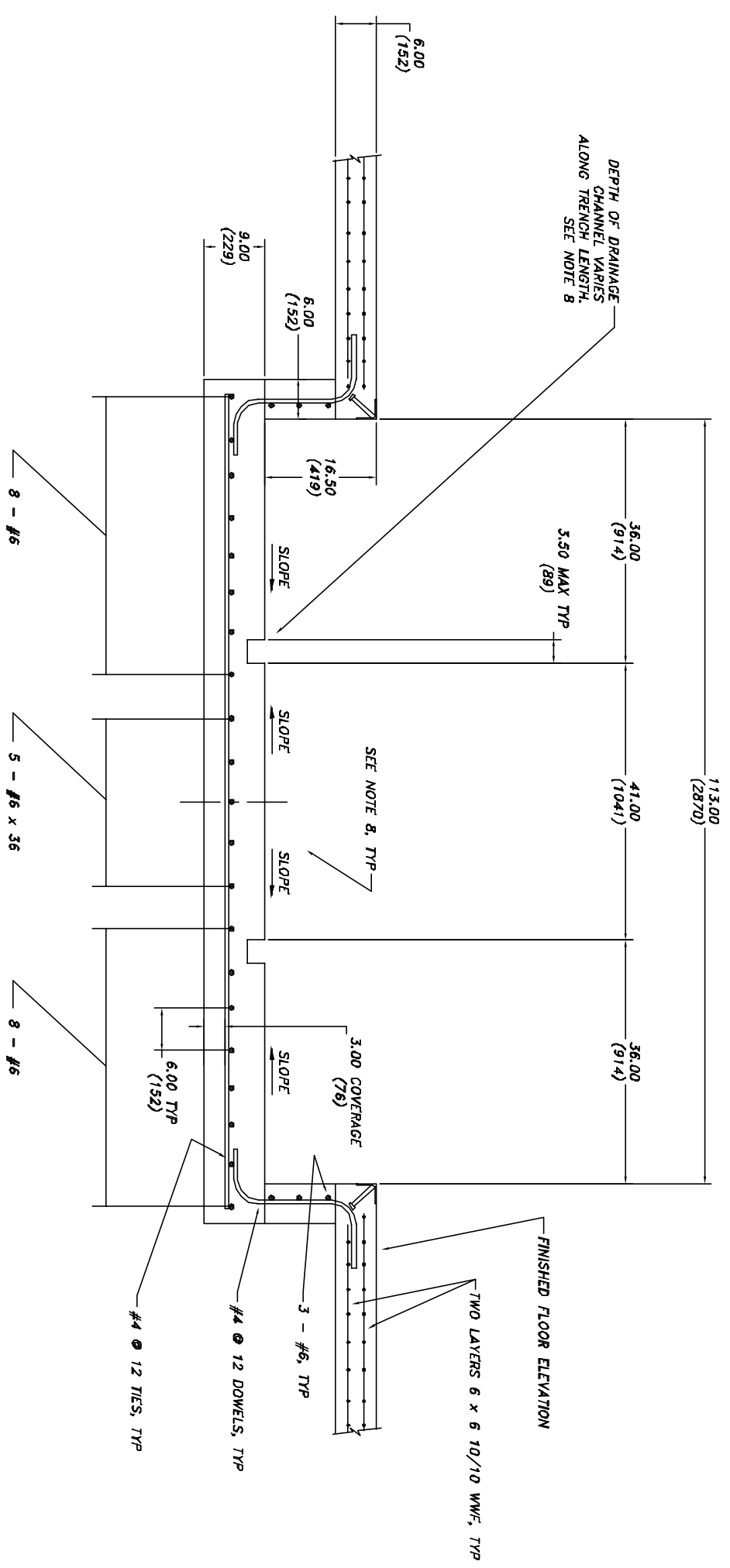
TOLERANCES:
 ANGULAR ± 1.0
 LINEAR ± .030
 DECIMAL 0.005
 HOLE ± .003

FILE NAME: P-3410-D-001
 NEXT ASSEMBLY:

SCALE: 3/84
 CHECKED: dsk

DATE: 7/11/05
 WEIGHT: LB.

MOHAWK RESOURCES LTD.
 TITLE: PIT DRAWINGS & SECTIONS FOR 100-48-F (FLSH)
 DRAWING NUMBER: P-3410-D-001



SECTION B-B

UNITS = INCHES (mm)

NOTICE OF CONFIDENTIAL INFORMATION
 INFORMATION CONTAINED HEREIN IS CONFIDENTIAL AND PROPERTY OF MOHAWK RESOURCES LTD. WHERE DRAWING IS FURNISHED TO OTHERS IN WHOLE OR IN PART, THE INFORMATION SHALL NOT BE USED OR DISCLOSED BY THE RECIPIENT FOR ANY OTHER PURPOSES WHATSOEVER.

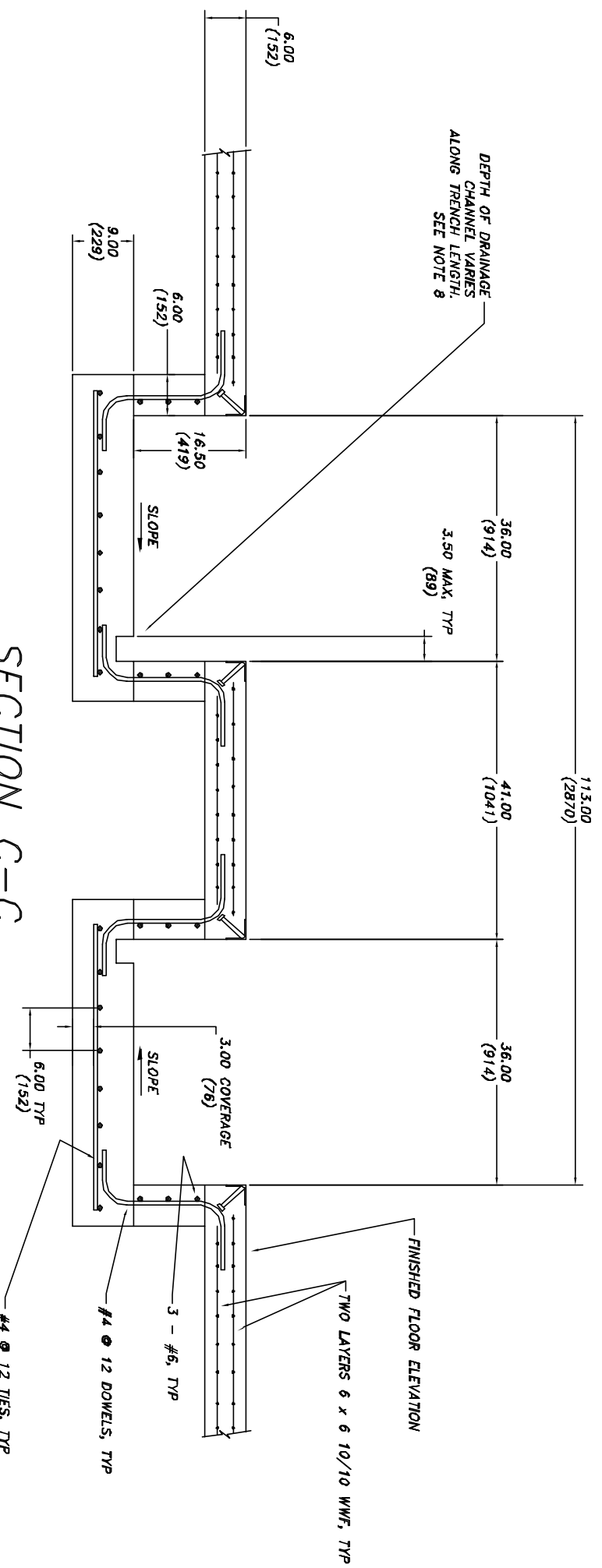
NOTES:
 1. REMOVE ALL SHARP CORNERS & EDGES.
 2. UNLESS OTHERWISE SPECIFIED, SURFACE FINISH TO BE A25 RMS.
 3. WELDING MEDUIM SHALL CONFORM TO AWS E-70TTI CODE S.3 FLUX CORE WIRE ONLY.

TOLERANCES:
 ANGULAR ± 1.0
 DIMENSIONAL ± 0.30
 HOLE ± 0.05
 FILE NAME: P-3410-D-001

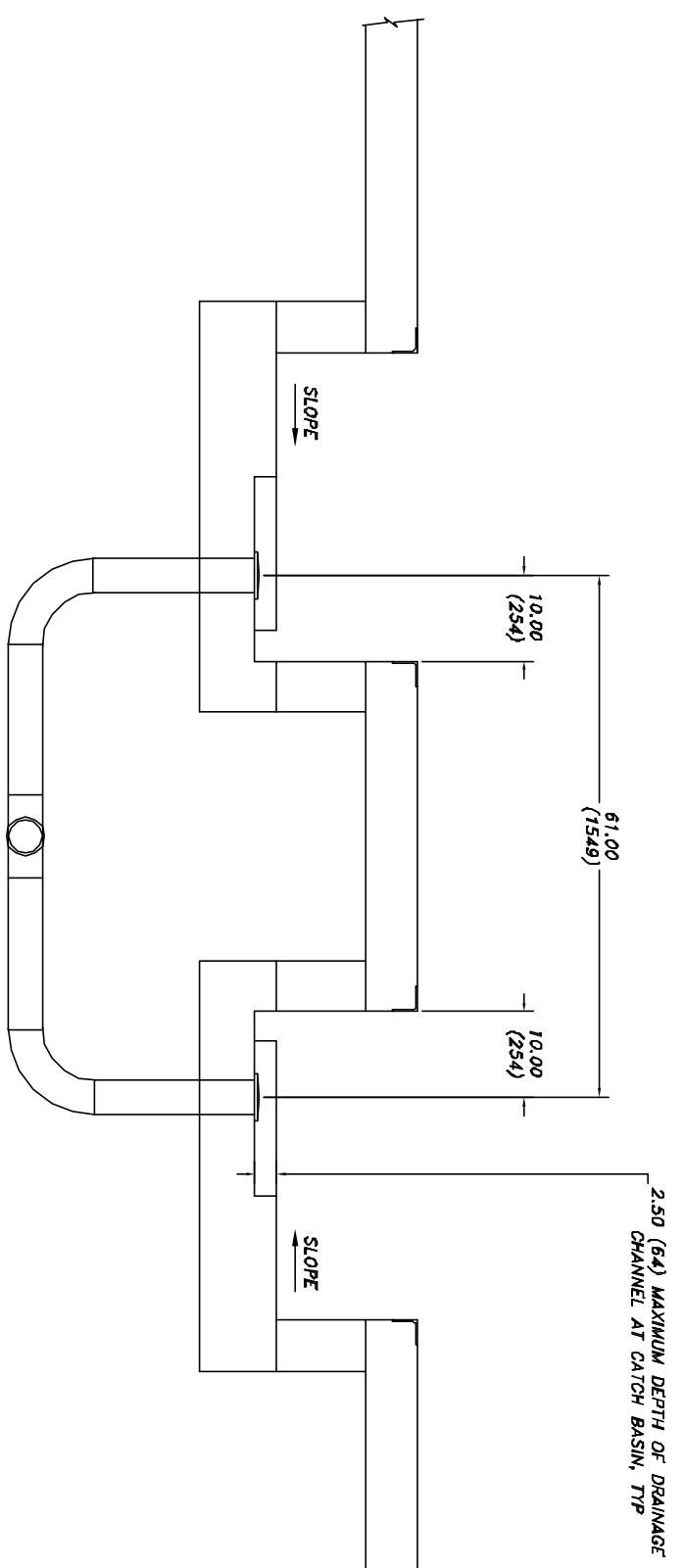
P-3410-A-001
 NEXT ASSEMBLY

SCALE: 3/32
 DATE: 1/11/05
 DRAWN: ddk
 APPROVED:

MOHAWK RESOURCES LTD.
 TITLE: PIT DRAWINGS & SECTIONS FOR 100-48-F (FLUSH)
 FROM: DRAWING NUMBER: P-3410-D-001



SECTION C-C

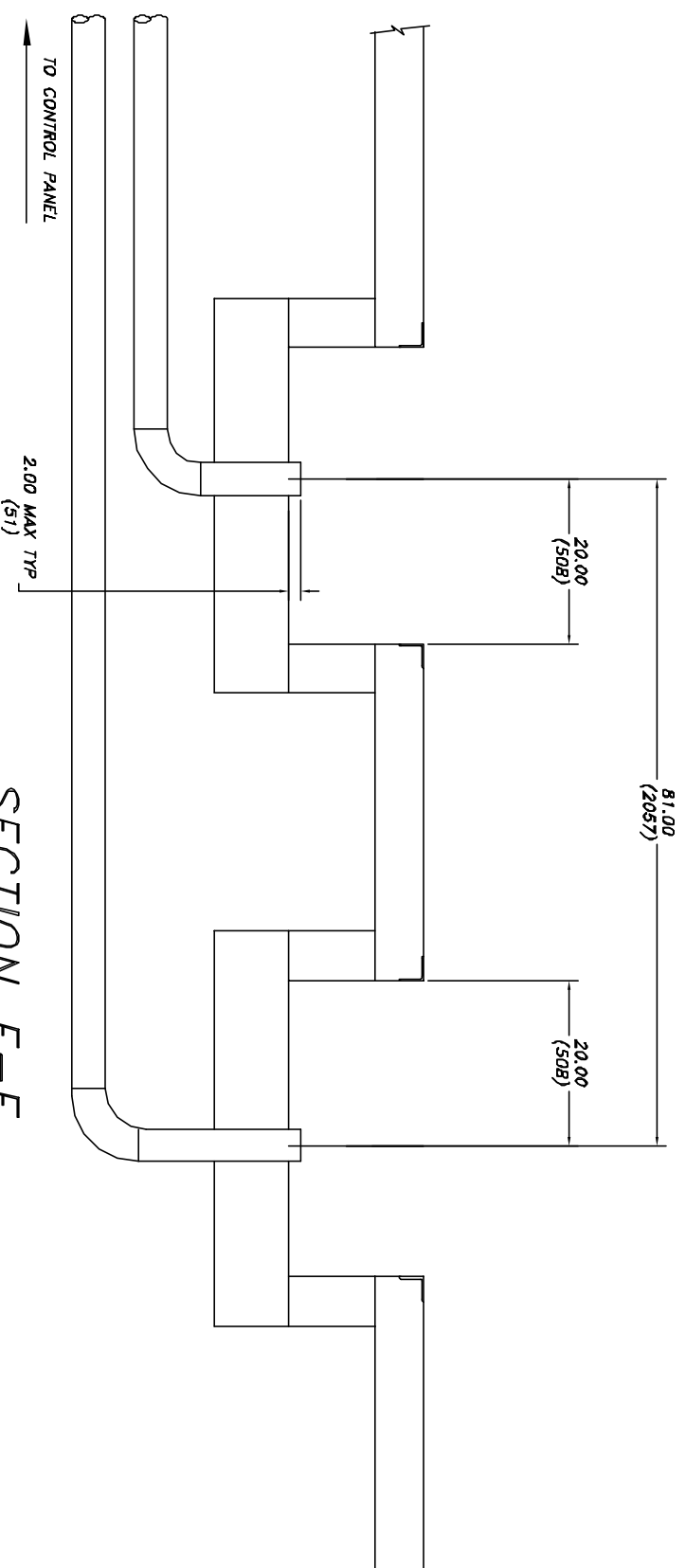


SECTION D-D

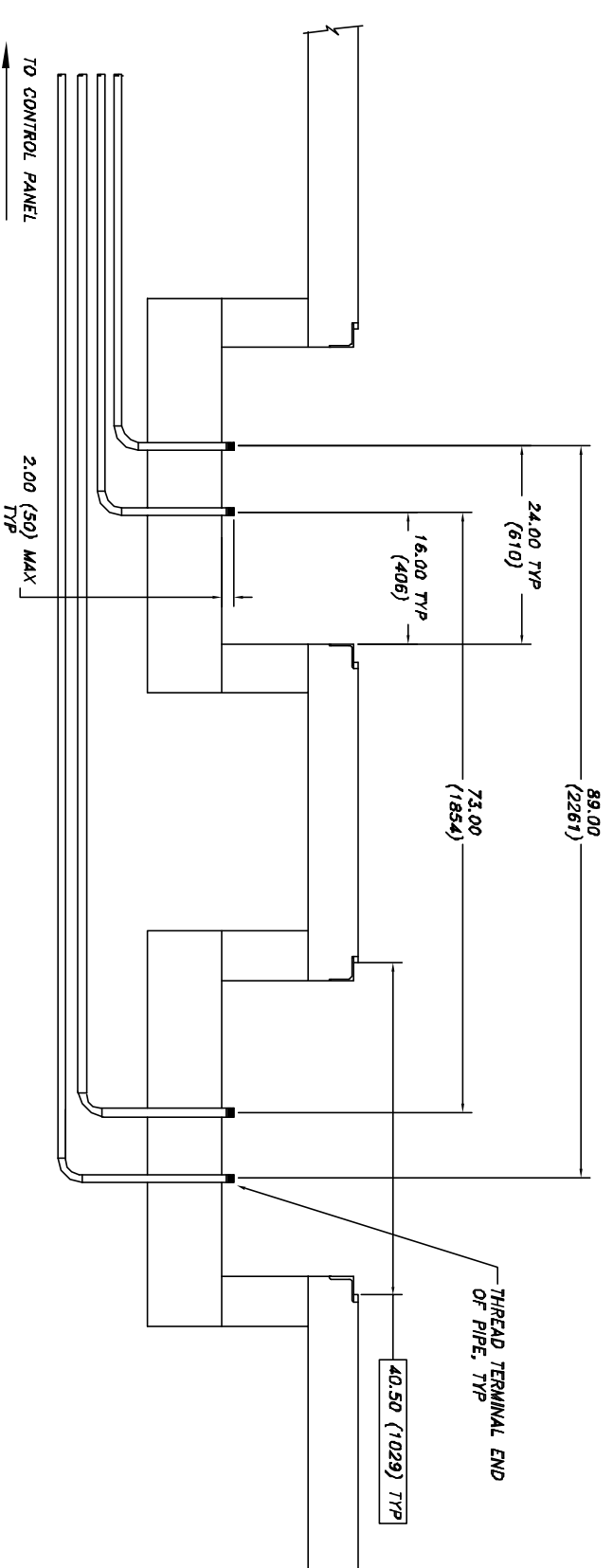
UNITS = INCHES (mm)

100-48-F
PAGE 5 of 8

NOTICE OF CONFIDENTIAL INFORMATION		NOTES:	
INFORMATION CONTAINED HEREIN IS CONFIDENTIAL AND PROPERTY OF MOHAWK RESOURCES LTD. THIS DRAWING IS FURNISHED TO OTHERS FOR MAINTENANCE OF THE INFORMATION SHALL NOT BE USED OR DISCLOSED BY THE RECIPIENT FOR ANY OTHER PURPOSES WHATSOEVER.		1. REMOVE ALL SHARP CORNERS & EDGES. 2. UNLESS OTHERWISE SPECIFIED, SURFACE FINISH TO BE J25 RMS. 3. WELDING MEDUIM SHALL CONFORM TO AWS E-70T1 CODE S3 FLUX CORE WIRE ONLY.	
TOLERANCES:		SCALE	
ANGULAR	± 1.0	3/32	DRAWN
RECTILINEAR	± .030	CHECKED	dck
DIMENSIONS	± .005	DATE	APPROVED
FILE NAME	P-3410-D-001	7/11/05	VEIGHT
NEXT ASSEMBLY			L.B.
		MOHAWK RESOURCES LTD.	
		TITLE	
		PIT DRAWINGS & SECTIONS	
		FOR 100-48-F (FLUSH)	
		DRAWING NUMBER	
		P-3410-D-001	



SECTION E-E



SECTION F-F

UNITS = INCHES (mm)

100-48-F
PAGE 6 of 8

D-SIZE

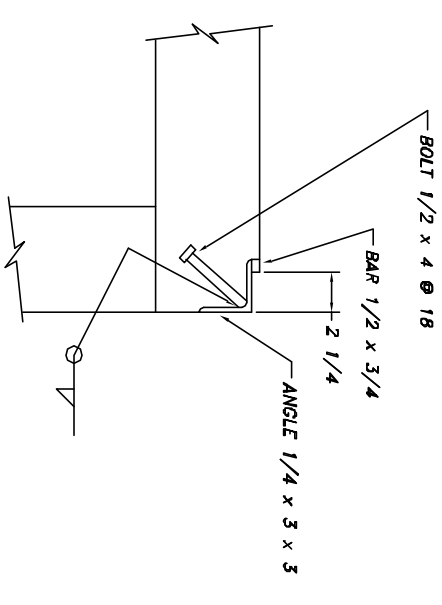
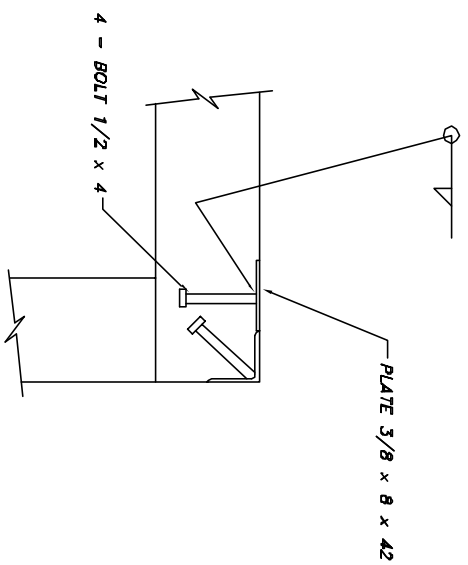
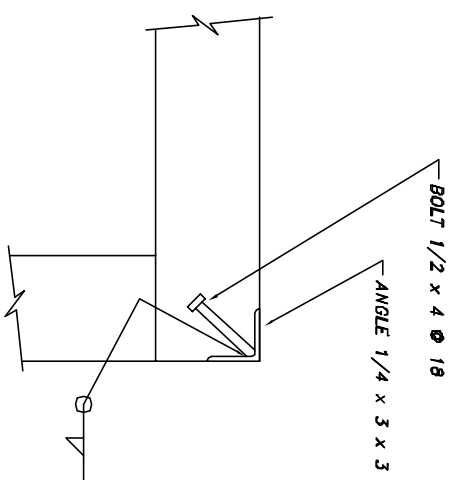
NOTICE OF CONFIDENTIAL INFORMATION

INFORMATION CONTAINED HEREIN IS CONFIDENTIAL AND PROPERTY OF MOHAWK RESOURCES LTD., WHICH IS LOANED TO THE RECIPIENT FOR THE PURPOSES OF INSTALLATION, OPERATION, MAINTENANCE AND REPAIR OF THE EQUIPMENT SPECIFIED IN THE DRAWING. IT IS TO BE KEPT STRICTLY CONFIDENTIAL AND NOT TO BE DISCLOSED TO ANY OTHER PERSONS WITHOUT THE WRITTEN PERMISSION OF MOHAWK RESOURCES LTD. BY THE RECIPIENT FOR ANY OTHER PURPOSES WHATSOEVER.

NOTES:

1. REMOVE ALL SHARP CORNERS & EDGES.
2. UNLESS OTHERWISE SPECIFIED, SURFACE FINISH TO BE 125 RMS.
3. WELDING METHOD SHALL CONFORM TO AWS SPECIFICATIONS TO E-70XX ELECTRODES OR E-7011 CODE S-3 FLUX CORE WIRE ONLY.

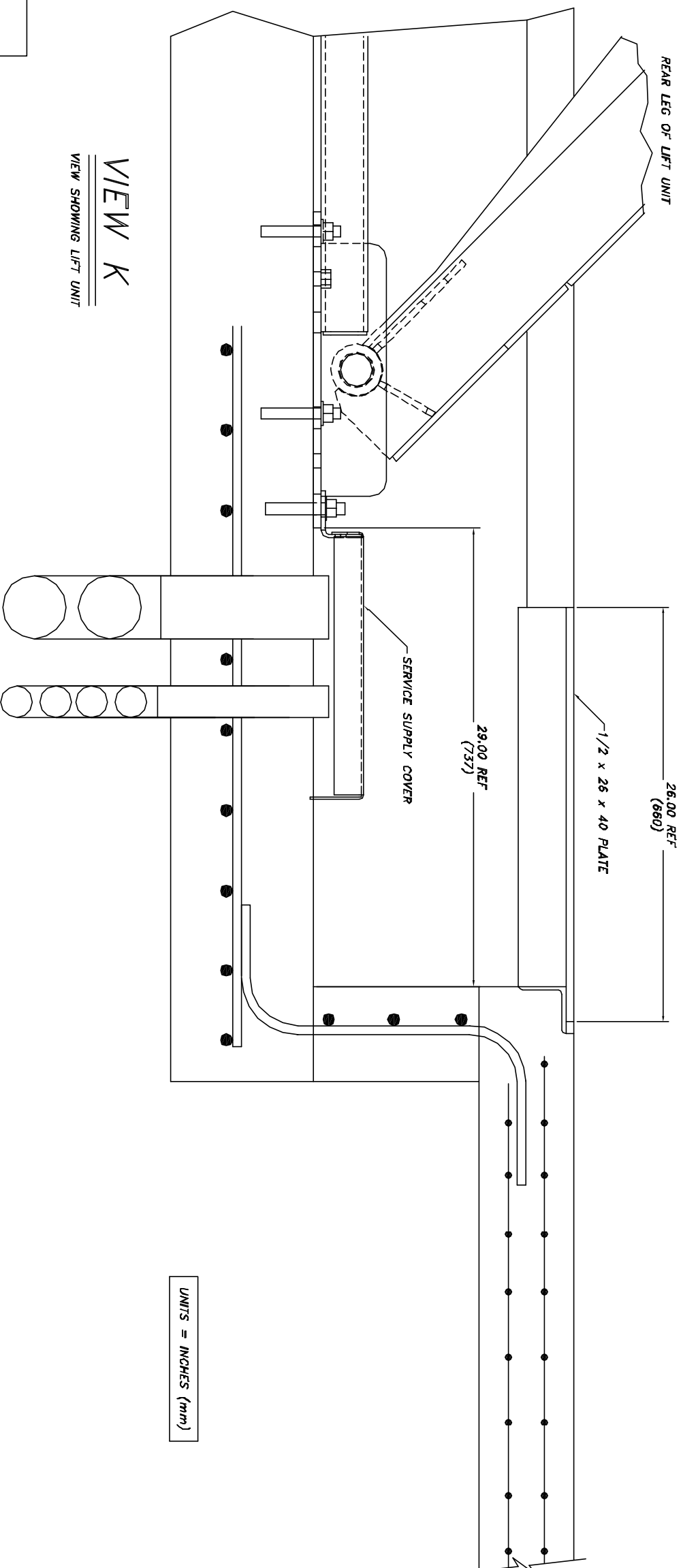
TOLERANCES:		SCALE		DRAWN	
ANGULAR	± 1°	P-3410-A-001	3/32	dak	
FRACTIONAL	± .031		CHECKED	APPROVED	
DECIMAL	± .030		DATE	WEIGHT	
DIMENSIONAL	± .005		7/11/05	LB.	
OTHER	± .005				
FILE NAME	P-3410-D-001				
NEXT ASSEMBLY					
		MOHAWK RESOURCES LTD.		TITLE	
				PIT DRAWINGS & SECTIONS	
				FOR 100-48-F (FLUSH)	
				FROM	
				DRAWING NUMBER	
				P-3410-D-001	



SECTION G

SECTION H

SECTION J



VIEW K
VIEW SHOWING LIFT UNIT

100-48-F
PAGE 7 of 8

D-SIZE

NOTICE OF CONFIDENTIAL INFORMATION
INFORMATION CONTAINED HEREIN IS CONFIDENTIAL AND PROPERTY OF MOHAWK RESOURCES LTD. WHERE DRAWING IS FURNISHED TO OTHERS IT SHALL BE USED ONLY FOR PURPOSES OF INSTALLATION, MAINTENANCE AND REPAIR AND NOT BE REPRODUCED OR DISCLOSED BY THE RECIPIENT FOR ANY OTHER PURPOSES WHATSOEVER.

NOTES:
1. REMOVE ALL SHARP CORNERS & EDGES.
2. UNLESS OTHERWISE SPECIFIED, SURFACE FINISH TO BE 125 RMS.
3. WELDING METHOD SHALL CONFORM TO AWS SPECIFICATIONS TO E-70XX ELECTRODES OR E-7011 CODE S3 FLOW CURVE WIRE DMLT.

TOLERANCES:
ANGULAR ± 1°
FRACTIONAL ± .030
DECIMAL ± .005
DXXX

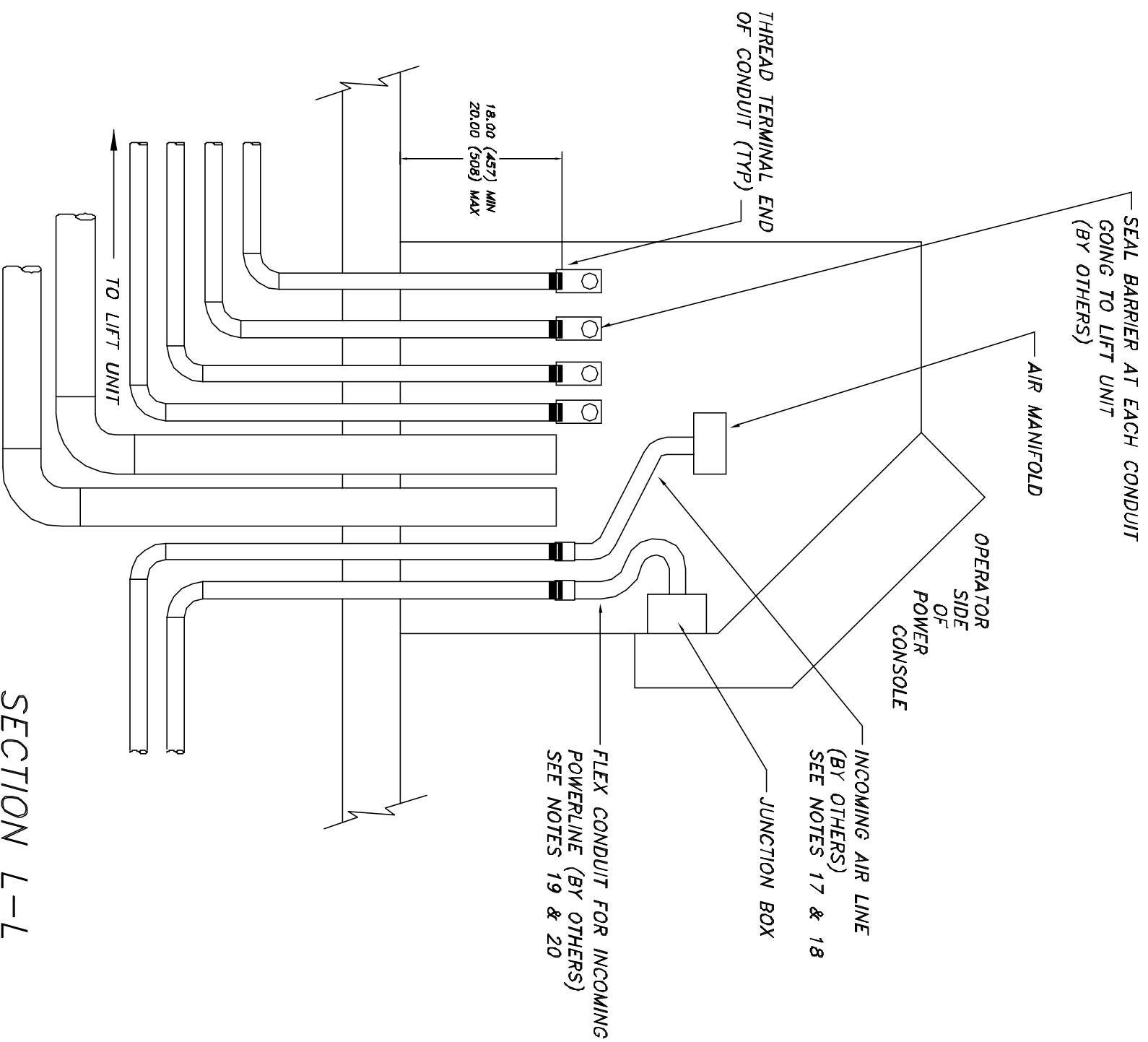
FILE NAME P-3410-D-001
NEXT ASSEMBLY

SCALE 3/32
CHECKED

DATE 7/11/05
VEIGHT LB.

MOHAWK RESOURCES LTD.
TITLE PIT DRAWINGS & SECTIONS FOR 100-48-F (FLUSH)
FRDM
DRAWING NUMBER P-3410-D-001

100-48-F
PAGE 8 of 8



SECTION L-L

UNITS = INCHES (mm)

NOTICE OF CONFIDENTIAL INFORMATION

INFORMATION CONTAINED HEREIN IS CONFIDENTIAL AND PROPERTY OF MOHAWK RESOURCES LTD. WHERE DRAWING IS FURNISHED TO OTHERS IT SHALL BE USED SOLELY FOR PURPOSES OF INSPECTION, INSTALLATION, AND MAINTENANCE. THE INFORMATION SHOWN HEREIN IS NOT TO BE REPRODUCED OR THE RIGHTS THEREIN ASSIGNED IN ANY MANNER WITHOUT THE WRITTEN PERMISSION OF MOHAWK RESOURCES LTD.

NOTES:

1. REMOVE ALL SHARP CORNERS & EDGES.
2. FINISH TO BE 120 RMS.
3. WELDING METHOD SHALL CONFORM TO AWS SPECIFICATIONS TO E-70XX ELECTRODES OR E-7011 CODE S3 FLOW CORE WIRE ONLY.

TOLERANCES:

ANGULAR ± 1.0°
FRACTIONAL ± .030
DECIMAL ± .005
XXX

FILE NAME P-3410-D-001

P-3410-A-001

NEXT ASSEMBLY

SCALE 3/64

CHECKED

DATE 7/11/05

DRAWN ddk

APPROVED

WEIGHT LB.

MOHAWK RESOURCES LTD.

TITLE PIT DRAWINGS & SECTIONS FOR 100-48-F (FLUSH)

FROM DRAWING NUMBER P-3410-D-001

LIFT DATA TABLE
MOHAWK RESOURCES, LTD
PARALLELOGRAM LIFT MODEL
100-48-FLUSH

LIFT UNIT DATA		
MAXIMUM LOAD CAPACITY (LBS)	100,000	--
ANCHORAGE	--	
ANCHOR BOLT DIAMETER (IN.)	3/4"	
TOTAL NUMBER OF ANCHOR BOLTS	84	
BOLT PATTERN	SEE ANCHOR DETAILS	
ANCHOR BOLT SETTING TORQUE	N/A- SEE ANCHOR DETAILS	
MINIMUM EMBEDMENT LENGTH (IN.)	3,00	
MINIMUM CONCRETE THICKNESS (IN.)	SEE PIT DRAWINGS	
HYDRAULIC RESERVOIR CAPACITY (GAL)	--	
OIL TYPE	30 TOTAL DEXRON III (ATF)	
ELECTRICAL MOTOR HORSEPOWER	--	
208/230 V 3 PH	20	
or 460 V 3 PH	60 AMPERE	
CONTROL CIRCUIT TRANSFORMER 1000 VA	30 AMPERE	
24 VDC POWER SUPPLY	7.69 AMP	
LIGHT FIXTURES (OPTIONAL LIGHTING KIT)	4.8 AMP	
SHOP AIR	12	
	--	
AIR PRESSURE (PSI)	85 to 100	
AIR VOLUME- LIFT (CFM)(LOCKS)	5	
AIR VOLUME- OPTIONAL ROLLING JACK (CFM)	25 EACH	
AIR VOLUME- OPTIONAL SHOP AIR KIT (CFM)	20	
AIR VOLUME- TOTAL REQ'D CAPACITY (CFM)	30 MINIMUM	
AIR VOLUME- TOTAL REQ'D CAPACITY (CFM)	50 SUGGESTED	

REQUIRED MATERIAL LIST

MATERIALS SHOWN ON THIS LIST SHALL BE USED WITHOUT
SUBSTITUTION UNLESS SPECIFICALLY APPROVED IN WRITING BY
MOHAWK RESOURCES, LTD.

12	1	LOCKOUT/TAGOUT DISCONNECT BOX	PER LOCAL ELECTRICAL CODES
11*	AR	LEVELING SHIMS	1/16", 1/8", 1/4" THICK
10*	56	3/4" x 5" ANCHOR BOLT ASSEMBLY	WEU-IT -- WEDGE ANCHORS
9	4	1" SEAL BARRIER	CROUSE - HINDS EYS3
8	4	1-3/4" REDUCER BUSHING	CROUSE - HINDS RS32
7	4	1" SCH 40-90 DEG ELBOW	CROUSE - HINDS EL3
6*	1	JUNCTION BOX (IN CONSOLE)	STEEL
5	AR	SEALTITE FLEXIBLE CONDUIT	METAL CORE
4	AR	1" RIGID CONDUIT	STEEL
3	1	FILTER/LUBRICATOR/REGULATOR, DRYER SHUTOFF	
2	AR	4" SCH 40 STREET ELBOW	STEEL or PVC
1	AR	4" SCH 40 PIPE	STEEL or PVC
ITEM	QTY	DESCRIPTION	MATERIAL
		* ITEMS SUPPLIED BY MOHAWK WITH THE LIFT UNIT	

NOTICE OF CONFIDENTIAL INFORMATION

INFORMATION CONTAINED HEREIN IS CONFIDENTIAL AND PROPERTY OF MOHAWK RESOURCES LTD. WHERE DRAWING IS FURNISHED TO OTHERS IT SHALL BE USED SOLELY FOR PURPOSES OF INSPECTION, INSTALLATION OR MAINTENANCE. THE INFORMATION SHALL NOT BE USED OR DISCLOSED OR REPRODUCED IN ANY MANNER WITHOUT THE WRITTEN PERMISSION OF MOHAWK RESOURCES LTD.

NOTES
1. REMOVE ALL SHARP CORNERS & EDGES.
2. UNLESS OTHERWISE SPECIFIED, SURFACE FINISH TO BE 125 RMS.
3. WELDING MEDIUM SHALL CONFORM TO AWS SPECIFICATIONS TO E-70XX ELECTRODES OR E-7011 CODE S3 FLUX CORE WIRE ONLY.

TOLERANCES
FRACTIONAL ± .030
DECIMAL ± .005
XXX ± .005

FILE NAME
P-3410-0-002

SCALE
DRAWN
DOK

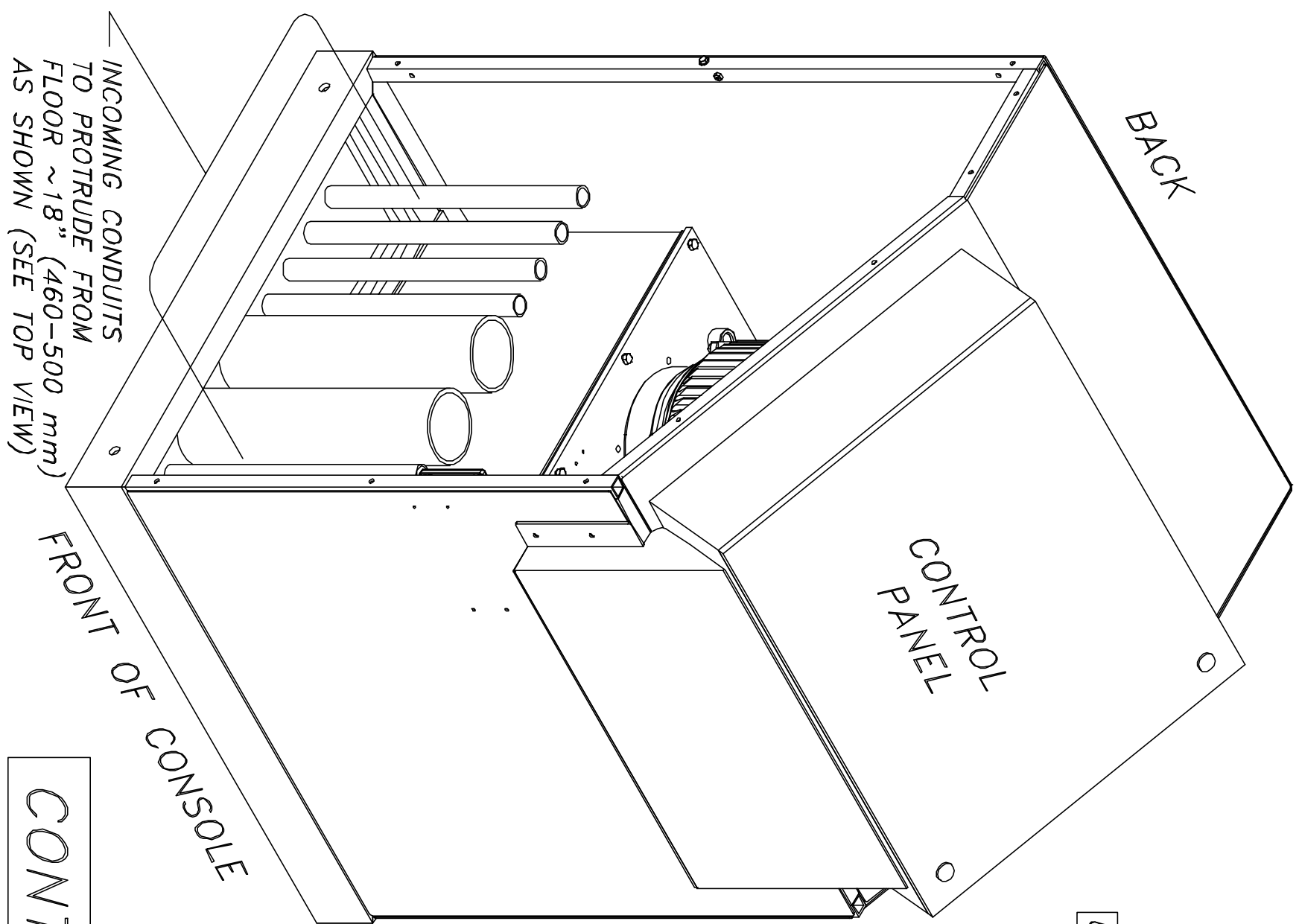
CHECKED
APPROVED
DATE
7/8/05
WEIGHT
LB.
TITLE
100-48-F (Flush)
LIFT DATA TABLE
DRAWING NUMBER
P-3410-0-002

MOHAWK RESOURCES LTD.

D-SIZE

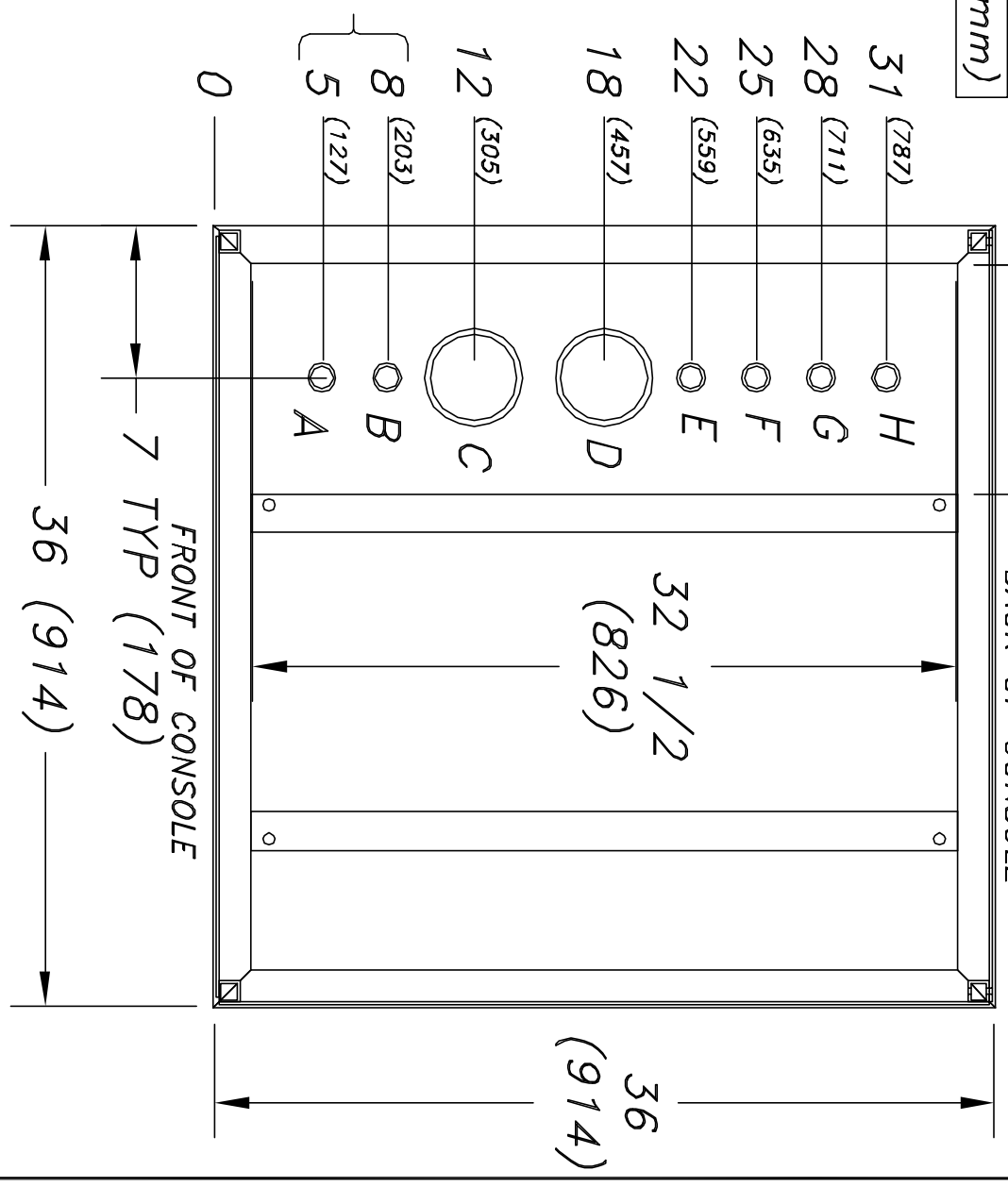
TOP VIEW OF CONSOLE FRAME

#	DESCRIPTION	DATE	APPROVED
A	Metric units added	08/22/2004	rwv7089



1 3/4 TYP
(44) → 10 5/8 (270)

UNITS = INCH (mm)



BY OTHERS

- 8 (203)
- 5 (127)

CONDUIT SIZES & APPLICATION:

- A: 1" (MIN) SCHED 40 STEEL PIPE - INCOMING POWER
- B: 1" (MIN) SCHED 40 STEEL PIPE - INCOMING AIRLINE
- C,D: 4" SCHED 40 PVC PIPE - HYDRAULIC & AIR TO LIFT
- E,F,G,H: 1" (MIN) SCHED 40 STEEL PIPE - ELECTRICAL TO LIFT

* NOTE: USE SMOOTH ELECTRICAL 90'S IN CONDUITS, NOT PLUMBING 90'S !!

CONTROL CONSOLE & STUB-UP DETAILS

NOTICE OF CONFIDENTIAL INFORMATION

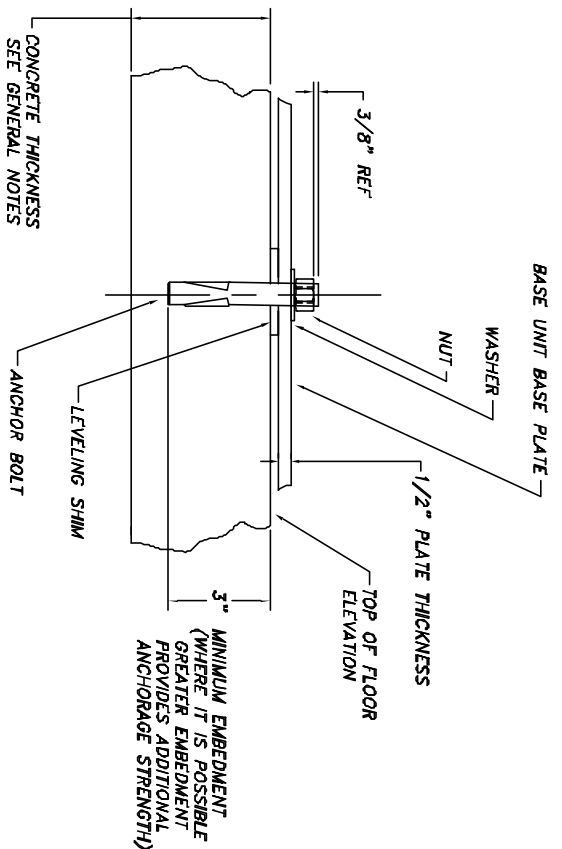
INFORMATION CONTAINED HEREIN IS CONFIDENTIAL AND PROPERTY OF MOHAWK RESOURCES LTD. WHILE DRAWING IS FURNISHED TO OTHERS IN SMALL QUANTITIES FOR PURPOSES OF INSPECTION, REVISIONS, OR REPRODUCTION, IT IS NOT TO BE REPRODUCED OR TRANSMITTED IN ANY FORM OR BY ANY MEANS, ELECTRONIC OR MECHANICAL, INCLUDING PHOTOCOPYING, RECORDING, OR BY ANY INFORMATION STORAGE AND RETRIEVAL SYSTEM, WITHOUT THE WRITTEN PERMISSION OF MOHAWK RESOURCES LTD.

NOTES:
1. REMOVE ALL SHARP CORNERS & EDGES.
2. UNLESS OTHERWISE SPECIFIED, SURFACE FINISH TO BE 125 RMS.
3. WELDING METHOD SHALL CONFORM TO AWS SPECIFICATIONS TO E-70XX ELECTRODES OR E-7011 CODE S3 FLUX CORE WIRE DUAL.

TOLERANCES:	SCALE	DRAWN	TITLE
ANGULAR ± 1.0	P-010-A-001	dsk	CONTROL CONSOLE & STUB-UP DETAILS
DECIMAL ± .030		APPROVED	
FRACTIONAL ± .030		CHECKED	
XXX ± .005		DATE	
FILE NAME P-010-D-003		WEIGHT	
		LB	
		FROM	
		TRAVEL NUMBER	
		P-010-D-003	

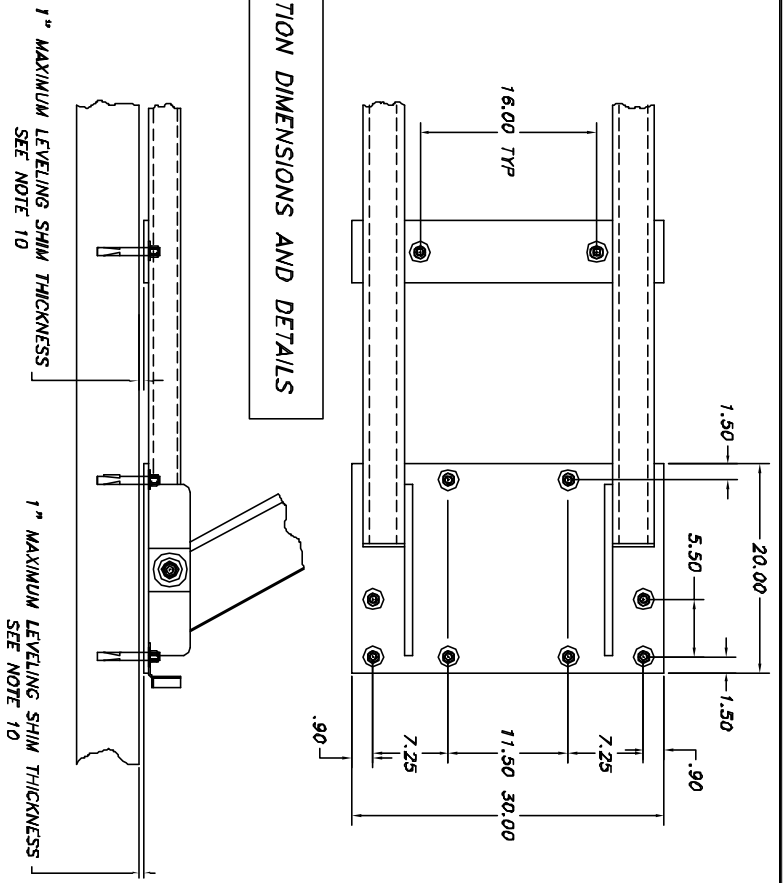
D-SIZE





ANCHOR BOLT DETAIL

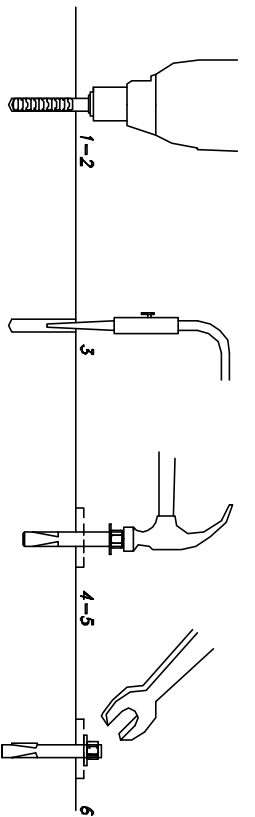
ANCHOR BOLT LOCATION DIMENSIONS AND DETAILS



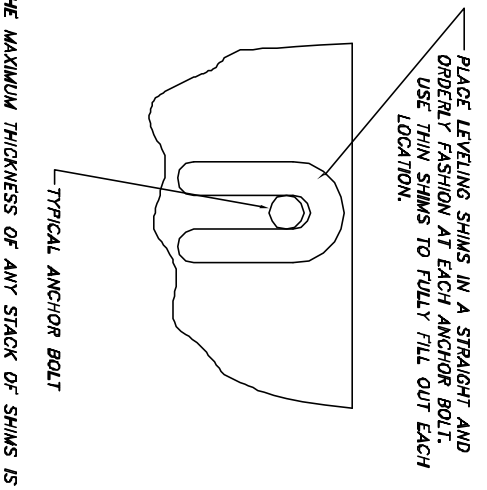
ANCHOR DETAILS & SHIMMING

INSTALLATION INSTRUCTIONS

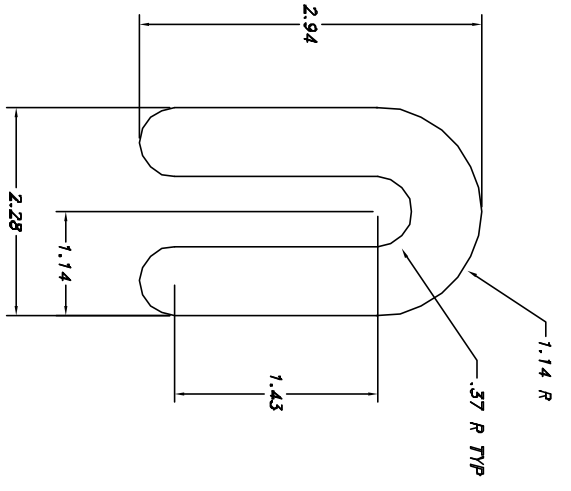
1. DRILL THE HOLE PERPENDICULAR TO THE WORK SURFACE. *TO ASSURE FULL HOLDING POWER, DO NOT REAM THE HOLE OR ALLOW THE DRILL TO WOBBLE.
2. DRILL THE HOLE DEEPER THAN THE INTENDED EMBEDMENT OF THE ANCHOR, BUT NOT CLOSER THAN TWO ANCHOR DIAMETERS TO THE BOTTOM (OPPOSITE) SURFACE OF THE CONCRETE.
3. CLEAN THE HOLE USING COMPRESSED AIR AND A NYLON BRUSH. A CLEAN HOLE IS NECESSITY FOR PROPER PERFORMANCE.
4. TURN THE NUT ONTO THE ANCHOR UNTIL CONTACT IS MADE WITH THE TOP OF THE SPEARS AND THE BOTTOM OF THE WASHER. INSERT ANCHOR INTO HOLE.
5. TAP ANCHOR INTO HOLE WITH A 2 1/2 LBS HAMMER UNTIL WASHER RESTS SOLIDLY AGAINST FIXTURE.
6. TIGHTEN THE NUT TO 175 FT-LBS MAXIMUM TORQUE AND NOT LESS THAN 3 FULL TURNS, BUT NOT MORE THAN 5 TURNS PAST THE HAND TIGHT POSITION. (USE OF AN IMPACT WRENCH FOR INSTALLATION OF ANCHORS IS NOT RECOMMENDED)



*ALWAYS WEAR SAFETY GLASSES. FOLLOW THE DRILL MANUFACTURER'S SAFETY INSTRUCTIONS. USE ONLY SOLID CARBIDE-TIPPED DRILL BITS MEETING ANSI B212.15 DIAMETER STANDARDS.

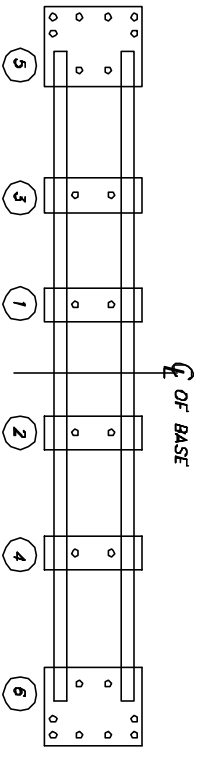


PLACEMENT OF LEVELING SHIM DETAIL



LEVELING SHIM DETAIL

REPRESENTATIVE TIGHTENING SEQUENCE FOR ANCHOR BOLTS



APPROVED ANCHOR BOLTS PROVIDED BY MOHAWK LIFT ANCHOR BOLTS ARE MANUFACTURED BY

WEU-IT FASTENING SYSTEMS
2415 EAST 13TH PLACE
TULSA, OKLAHOMA 74104
PHONE 918-744-7444
OR 800-343-1264
WEB SITE WWW.WEUIT.COM

ANCHORS SPECIFIED ARE: "THE ORIGINAL WEU-IT" EXPANSION ANCHORS, 3/4 DIA

CATALOG NUMBER	LENGTH
3460	6"
3482	8 1/2"
3410	10"

NO OTHER ANCHOR BOLT SUBSTITUTIONS ARE PERMITTED WITHOUT WRITTEN APPROVAL FROM MOHAWK RESOURCES, LTD. UNDER CERTAIN CIRCUMSTANCES EPOXY GROUTED THREADED ROD ANCHORAGE MAY BE USED BUT ANY USE OF SUCH REQUIRES WRITTEN APPROVAL OF MOHAWK RESOURCES, LTD. ANY OTHER UNAPPROVED ANCHOR BOLT PRODUCT MAY NOT HAVE THE DOCUMENTED STRENGTH TO MEET THE CERTIFICATION REQUIREMENTS OF THE AUTOMOTIVE LIFT INSTITUTE AND MAY AFFECT THE CERTIFICATION OF THE INSTALLATION.

NOTICE OF CONFIDENTIAL INFORMATION
INFORMATION CONTAINED HEREIN IS CONFIDENTIAL AND PROPERTY OF MOHAWK RESOURCES, LTD. THIS DRAWING IS FURNISHED TO OTHERS ON A NON-EXCLUSIVE BASIS AND IS NOT TO BE REPRODUCED OR TRANSMITTED IN ANY FORM OR BY ANY MEANS, ELECTRONIC OR MECHANICAL, INCLUDING PHOTOCOPYING, RECORDING, OR BY ANY INFORMATION STORAGE AND RETRIEVAL SYSTEM, WITHOUT THE WRITTEN PERMISSION OF MOHAWK RESOURCES, LTD. THE RECIPIENT FOR ANY OTHER NUMBERS WAIVES SUCH RIGHTS.

NOTES:
1. REMOVE ALL SHARP CORNERS & EDGES.
2. UNLESS OTHERWISE SPECIFIED, SURFACE FINISH TO BE 125 RNS.
3. WELDING MEDIUM SHALL CONFORM TO AWS SPECIFICATIONS TO E-70XX ELECTRODES OR E-70T1 CODE S3 FLUX CODE WIRE ONLY.

TOLERANCES:	FILE NAME
ANGULAR ± 1.0	P-010-D-004
FRACTIONAL ± .030	
DECIMAL ± .005	
XXX ± .005	

SCALE	DRAWN
P-010-A-001	ddk

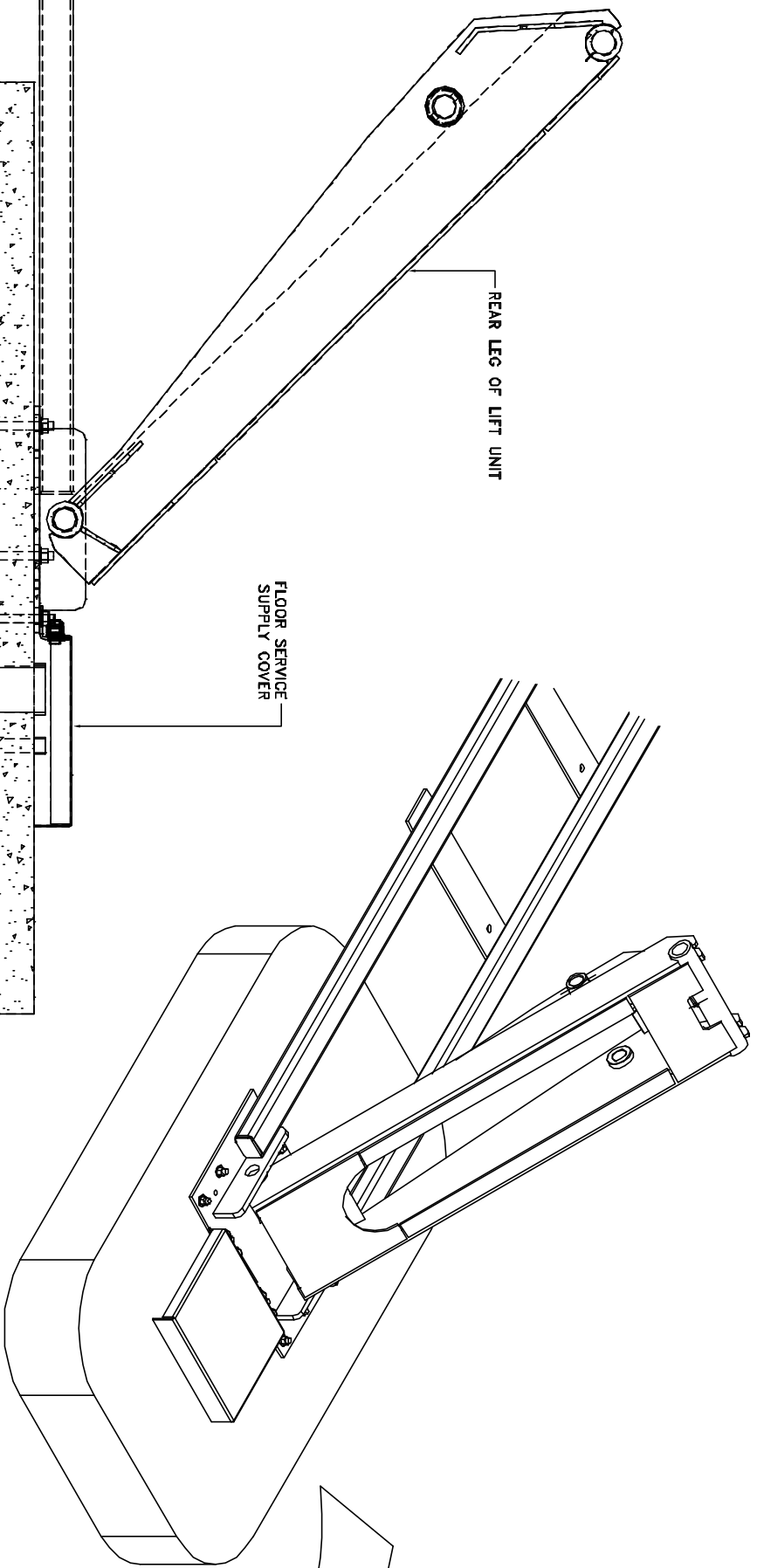
CHECKED	APPROVED

DATE	WEIGHT
4/03	LB

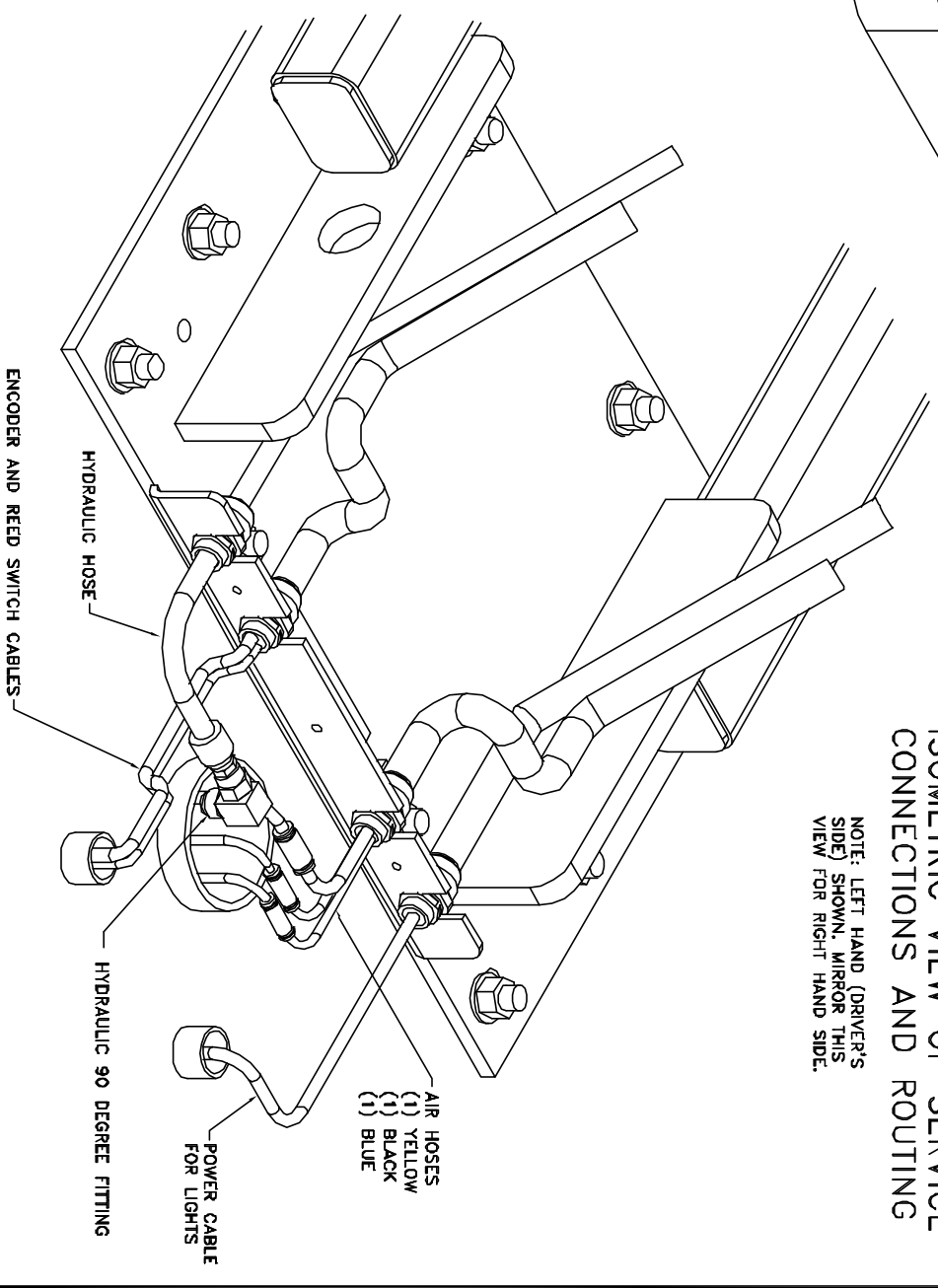
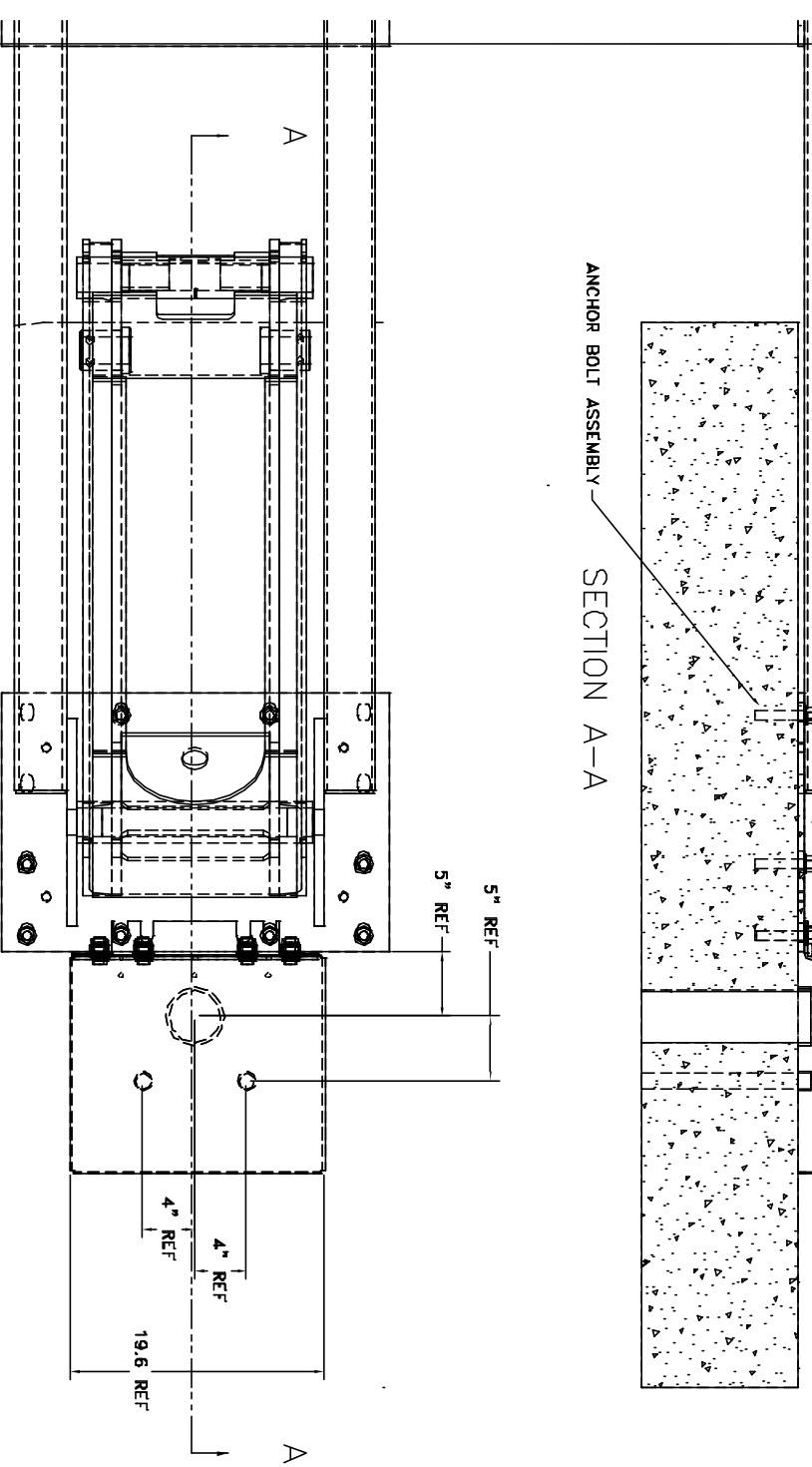
TITLE	DRAWING NUMBER
ANCHOR DETAILS & SHIMMING	P-010-D-004

D-size

MOHAWK RESOURCES LTD.



ISOMETRIC VIEW OF SERVICE CONNECTIONS AND ROUTING
 NOTE: LEFT HAND (DRIVER'S SIDE) SHOWN, MIRROR THIS VIEW FOR RIGHT HAND SIDE.



NOTICE OF CONFIDENTIAL INFORMATION
 INFORMATION CONTAINED HEREIN IS CONFIDENTIAL AND PROPERTY OF MOHAWK RESOURCES LTD. WRITING DRAWING IS FURNISHED TO OTHERS ON A NON-EXCLUSIVE BASIS. THIS INFORMATION SHALL NOT BE USED OR DISCLOSED BY THE RECIPIENT FOR ANY OTHER PURPOSES WHATSOEVER.

NOTES:
 1. REMOVE ALL SHARP CORNERS & EDGES.
 2. UNLESS OTHERWISE SPECIFIED, SURFACE FINISH TO BE 125 RMS.
 3. WELDING MEDIUM SHALL CONFORM TO AWS SPECIFICATIONS TO E-70XX ELECTRODES OR E-70TTI CODE S3 FLUX CORE WIRE ONLY.

FILE NAME
P-010-D-005

PREVIOUS DRAWING
P-010-A-001

DATE
4/15/03

MOHAWK RESOURCES LTD.
 DRAWN: **PWW/089**
 TITLE: **Parallelogram Installation Service Leg Conduit Details**
 DRAWING NUMBER: **P-010-D-005**

D-SIZE

GENERAL NOTES

NOTE 1 CONCRETE USED FOR THE BASE AND THE SIDE WALLS OF EACH TRENCH AND ANY OTHER NEW CONCRETE WHICH IS USED FOR THIS INSTALLATION MAY HAVE A MINIMUM STRENGTH OF F'c=2,500 psi, A STRENGTH OF F'c=4,000 psi IS RECOMMENDED WHERE POSSIBLE.

NOTE 2 CONCRETE USED FOR THE BASE AND SIDEWALLS OF THE TRENCH AREAS SHALL REACH ITS FULL 28 DAY F'c STRENGTH BEFORE THE LIFT AND THE ANCHOR BOLTS ARE INSTALLED.

NOTE 3 CONCRETE REINFORCEMENT SIZES AND REINFORCEMENT SPECIFICATION FOR THE BASE OF EACH TRENCH SHALL BE DETERMINED BY AN ENGINEER OR ARCHITECT (AT THE EXPENSE OF THE PURCHASER) AND SHOULD BE DETERMINED CONSIDERING THE LOCAL SOIL CONDITIONS AND THE APPLIED LOADING. AS A MINIMUM, GRADE 60 REINFORCEMENT OF THE SIZE AND SPACING SHOWN ON THE DRAWINGS SHALL BE USED.

NOTE 4 CONCRETE REINFORCEMENT SPECIFICATIONS FOR THE FLOOR AREA AROUND THE TRENCHES SHALL BE DETERMINED BY AN ENGINEER OR ARCHITECT (AT THE EXPENSE OF THE PURCHASER) AND SHOULD BE DETERMINED CONSIDERING THE LOCAL SOIL CONDITIONS AND THE APPLIED LOADING. AS A MINIMUM, TWO LAYERS OF GRADE 60, 6X6-10/10 WELDED WIRE FABRIC SHOULD BE USED IN THE VICINITY OF THE LIFT UNIT AND BETWEEN THE TRENCHES.

NOTE 5 THE REINFORCING STEEL USED IN THE BASE OF THE TRENCHES SHALL BE INSTALLED SO AS TO NOT INTERFERE WITH THE ANCHOR BOLTS USED TO ATTACH THE LIFT UNIT.

NOTE 6 WE-JIT FASTENING SYSTEMS, AT WEDGE ANCHORS ARE PROVIDED WITH THE LIFT FOR ANCHORING THE LIFT UNIT TO THE FLOOR SYSTEM. THE NUMBER AND THE SIZE OF ANCHOR BOLTS SPECIFIED IN THE DRAWING MUST BE USED TO ATTACH THE LIFT UNIT. ANCHOR BOLTS OF FULL LENGTH MUST BE USED IN ALL LOCATIONS PROVIDED ON THE BASE OF THE LIFT UNIT.

NOTE 7 CARE MUST BE TAKEN TO ENSURE THAT THE SIDE WALLS OF THE TRENCH ARE PARALLEL AND STRAIGHT. APPROXIMATELY 1/2 OF CLEARANCE IS PROVIDED ALONG THE SIDES OF THE RUNWAYS.

NOTE 8 SLOPE THE BOTTOM OF THE TRENCH 1/16 INCH PER FOOT TOWARD THE DRAINAGE CHANNEL. SLOPE THE DRAINAGE CHANNEL 1/16 INCH PER FOOT TOWARD THE CATCH BASIN.

NOTE 9 CARE MUST BE TAKEN TO ENSURE THAT THE BASE OF THE TRENCH AREAS ARE AT THE PROPER ELEVATION. A MAXIMUM OF ONE INCH ADJUSTMENT (SHIMMING) IS PERMITTED FOR INSTALLATION LEVELING.

NOTE 10 WHERE MORE THAN 3/4 INCH OF SHIM LEVELING IS REQUIRED, FULL SUPPORT PLATE CONTACT SHIMS ARE AVAILABLE AT ADDITIONAL COST. THE FULL CONTACT SHIM PLATES SHALL THEN BE ACCURATELY LEVELED USING INDIVIDUAL ANCHOR BOLT SHIMS. INDIVIDUAL ANCHOR BOLT SHIMS ARE AVAILABLE IN A RANGE OF THICKNESSES FROM 1/16 INCH TO 1/4 INCH.

NOTE 11 NO EMBEDDED PLUMBING, TUBES, CONDUITS OR OTHER ITEMS, EXCEPT THE LIFT UNIT SERVICE LEG CONDUITS SHALL BE CLOSER THAN 16 INCHES FROM ANY ANCHOR BOLT. ALSO, THE SERVICE LEG CONDUITS SHALL BE INSTALLED ACCURATELY IN THE LOCATIONS SHOWN IN THE PLAN AND DETAIL VIEWS TO MINIMIZE THE EFFECT ON THE ANCHORAGE.

NOTE 12 PROVIDE TWO, 4 INCH SCH 40 PVC PIPE AS A HYDRAULIC-PNEUMATIC SERVICE SUPPLY CONDUIT RUNNING FROM THE POWER UNIT TO EACH SERVICE LEG.

NOTE 13 PROVIDE 4, 1 INCH SCH 40 STEEL CONDUITS AS ELECTRICAL SERVICE SUPPLY RUNNING FROM THE POWER UNIT TO THE SERVICE LEGS. THESE CONDUITS SHALL BE INSTALLED AS SHOWN ON THE SECTION VIEWS AND MUST BE INSTALLED ACCORDING TO APPLICABLE ELECTRICAL CODES.

NOTE 14 ONE 4 INCH SCH 40 PVC DRAIN PIPE SHOULD BE PROVIDED TO CARRY DRAINAGE FROM THE CATCH BASINS TO AN OIL-WATER SEPARATOR. THIS PIPE SHOULD SLOPE A MINIMUM OF 1/16 INCH PER FOOT TOWARD THE DESTINATION.

NOTE 15 PROVIDE TEMPORARY CAPS FOR ALL CONDUITS AND EMBEDDED PIPES. IT IS RECOMMENDED TO LEAVE PULL ROPES IN CONDUITS FOR EASE OF LIFT INSTALLATION.

NOTE 16 THE CONTROL CONSOLE MUST BE LOCATED IN THE VICINITY OF THE LIFT. IT SHOULD BE PLACED FAR ENOUGH AWAY FROM THE LIFT TO ALLOW FOR ACTIVITIES AROUND THE LIFT. THE ENCLOSED DRAWINGS SHOW THE CONSOLE IN A STANDARD POSITION. THE CONTROL CONSOLE MAY BE LOCATED ON EITHER SIDE AND ANYWHERE ALONG THE LENGTH OF THE LIFT, BUT ANY DEVIATIONS FROM THE ENCLOSED DRAWINGS MAY REQUIRE LONGER CABLES, HOSES, CONDUIT, ETC. AT ADDITIONAL EXPENSE TO THE PURCHASER.

NOTE 17 THE LIFT UNIT REQUIRES CLEAN DRY COMPRESSED AIR AT THE PRESSURE AND VOLUME SHOWN ON THE LIFT UNIT DATA TABLE. A FILTER/LUBRICATOR/REGULATOR IS SUPPLIED WITH THE LIFT UNIT FOR THE LOCKING SYSTEM ONLY. A FILTER/LUBRICATOR/REGULATOR, AIR DRYER AND SHUTOFF VALVE MUST BE PROVIDED FOR THE LIFT UNIT TO OPERATE THE OPTIONAL ACCESSORIES. THE REQUIRED VOLUME OF AIR SHOWN IN THE LIFT UNIT DATA TABLE RECOGNIZES THAT NOT MORE THAN ONE AUXILIARY AIR CONSUMER WILL BE USED SIMULTANEOUSLY.

NOTE 18 PROVIDE ONE, 1 INCH SCH 40 RIGID STEEL CONDUIT AS A COMPRESSED AIR SUPPLY. THIS CONDUIT IS SHOWN UNDERGROUND, ALTERNATIVELY IT MAY BE BROUGHT TO THE CONTROL PANEL OVERHEAD DEPENDING ON CUSTOMER PREFERENCE. IF BROUGHT OVERHEAD, PROVIDE FLEX CONDUIT CONNECTING THE TERMINAL END OF THE CONDUIT TO THE CONTROL CONSOLE.

NOTE 19 THE LIFT UNIT REQUIRES A HIGH VOLTAGE POWER SOURCE. A LOCKOUT/TAGOUT ELECTRICAL DISCONNECT BOX MUST BE PROVIDED FOR THE POWER SOURCE. THE LOCKOUT/TAGOUT DISCONNECT BOX MUST BE INSTALLED ACCORDING TO APPLICABLE ELECTRICAL CODES. THIS ELECTRICAL DISCONNECT IS TO BE PROVIDED BY OTHERS.

NOTE 20 PROVIDE ONE, 1 INCH SCH 40 RIGID STEEL CONDUIT AS ELECTRICAL SERVICE SUPPLY RUNNING FROM THE BUILDING POWER SOURCE TO THE CONTROL CONSOLE. THIS CONDUIT IS SHOWN UNDERGROUND, ALTERNATIVELY IT MAY BE BROUGHT TO THE CONTROL PANEL OVERHEAD DEPENDING ON CUSTOMER PREFERENCE. PROVIDE A LOCKOUT/TAGOUT ELECTRICAL DISCONNECT BOX WITHIN SIGHT AND AS CLOSE TO THE CONTROL CONSOLE AS IS PRACTICAL. THIS ELECTRICAL SUPPLY CONDUIT AND DISCONNECT BOX MUST BE INSTALLED ACCORDING TO LOCAL ELECTRICAL CODE REQUIREMENTS.

NOTE 21 ALL FLOOR REQUIREMENTS ARE BASED ON A CONCRETE SLAB THAT IS ON GRADE (SUPPORTED BY SOIL). ANY OTHER TYPE OF INSTALLATION INVOLVING A SLAB NOT ON GRADE (I.E.-SLAB SUPPORTED BY PYLONS, SECOND STORY SLAB, ETC.) MUST BE REVIEWED & ANALYZED FOR SUITABILITY BY THE BUILDING ARCHITECT, AT THE EXPENSE OF OTHERS.

FLUSH LIFTS ONLY

NOTICE OF CONFIDENTIAL INFORMATION
 INFORMATION CONTAINED HEREIN IS CONFIDENTIAL AND PROPERTY OF MOHAWK RESOURCES LTD. WHERE EXAMINE OR PLANNED TO OTHERS WITHOUT THE WRITTEN PERMISSION OF MOHAWK RESOURCES LTD. FOR MAINTENANCE. THE INFORMATION SHALL NOT BE USED OR DISCLOSED BY THE RECIPIENT FOR ANY OTHER PURPOSES WHATSOEVER.

NOTES:
 1. REMOVE ALL SHARP CORNERS & EDGES.
 2. UNLESS OTHERWISE SPECIFIED, SURFACE FINISH TO BE 125 RMS.
 3. WELDING MEDIUM SHALL CONFORM TO AWS SPECIFICATIONS TO E-70XX ELECTRODES OR E-7011 CODE 5.3 FLUX CORE WIRE DMLY.

TOLERANCES:
 ANGULAR ± 1.0
 HORIZONTAL ± .030
 VERTICAL ± .030
 FINISH TO BE 125 RMS
 FILE NAME P-1010-D-006

P-1010-A-001

SCALE

CHECKED

DATE 5/03

DRAWN PWWZ089

APPROVED

VEIGHT L.B.

FROM

MOHAWK RESOURCES LTD.
 FLUSH INSTALLATION
 GENERAL NOTES
 DRAWING NUMBER P-1010-D-006